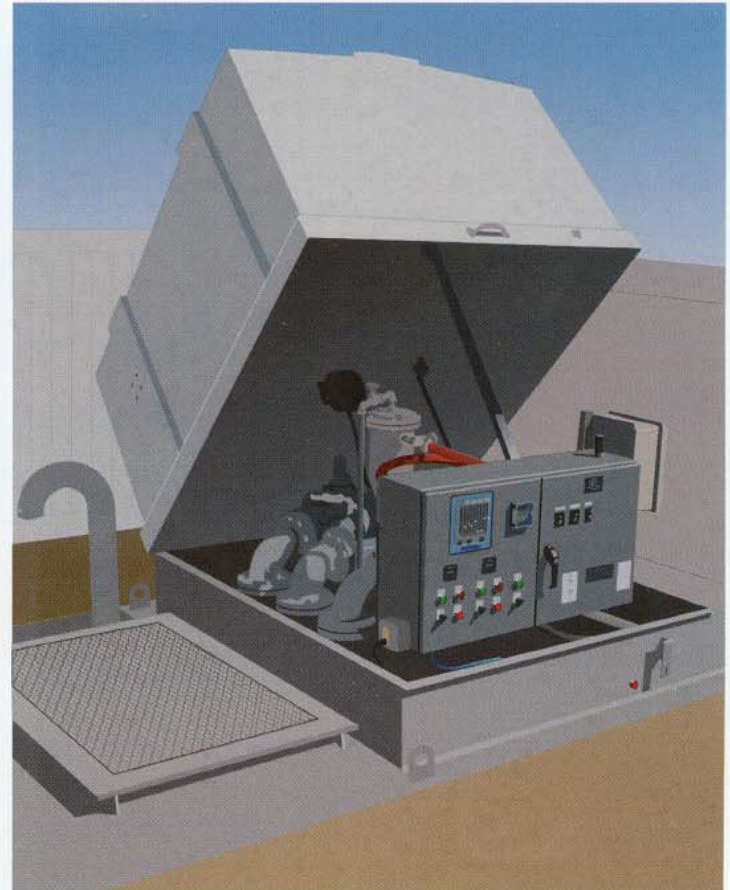
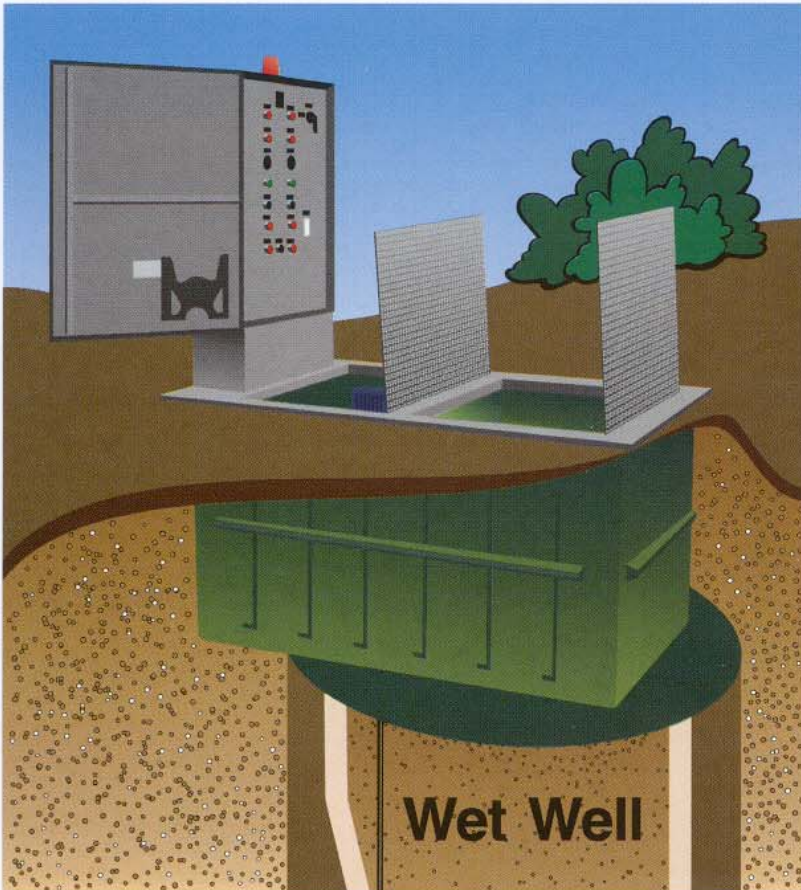




VALVE-PAC



Factory-Built Valve Packages

The Valve-Pac is an ideal way to reduce field installation time and expense at a wastewater pump station. It is available in two basic designs, above-grade Tip-Up and Buried. Both designs feature suction and discharge bypass pump connections; a standard for all Precision Systems equipment.

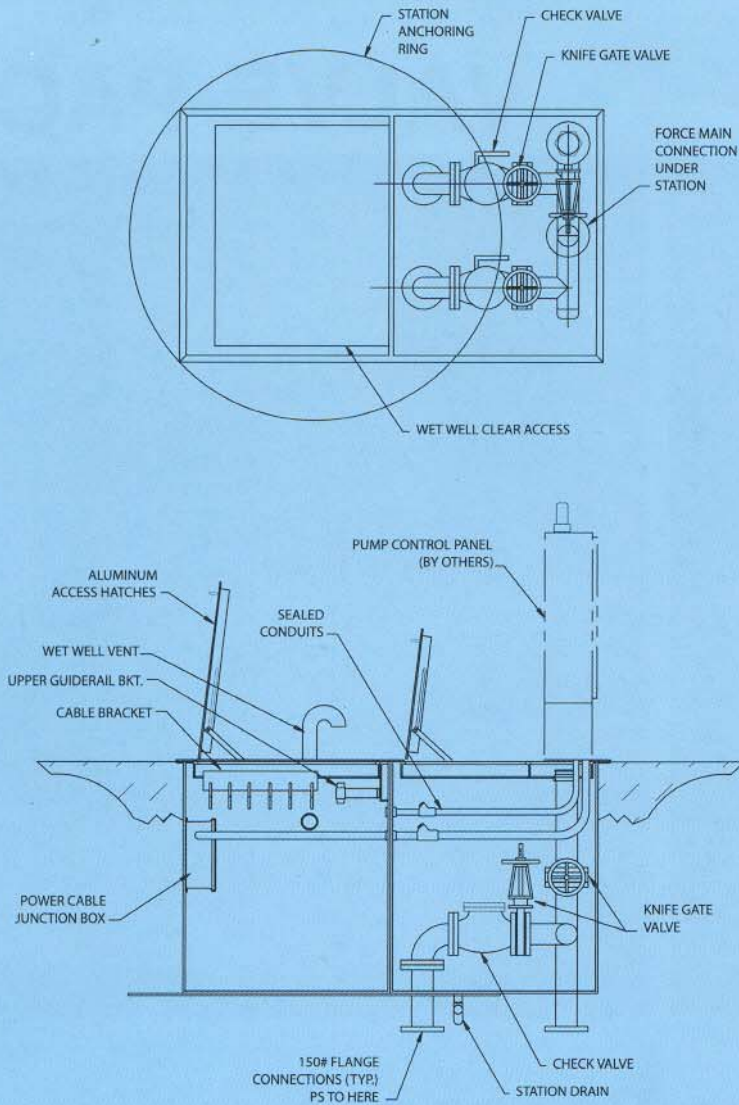
The above grade Tip-Up Valve-Pac design features pre-piped valves in an easily-serviceable horizontal position, and eliminates the need for service personnel to enter a confined space valve vault. Housed in an attractive fiberglass enclosure, the unit is supplied with an air release valve, a 300 P.S.F. pump access hatch, and a wet well vent as standard equipment. An optional heater for the enclosure is available.

The Buried Valve-Pac eliminates the need for a separate buried valve vault. It is designed so that the module is installed below grade with separate 300 P.S.F. hatches for pump access and valve servicing. Its compact design is ideal for sites with limited space availability.

Both Valve-Pac designs are easy to install, and can be used either on new or retrofit to existing pump stations.

Consider a Precision Systems Valve-Pac on your next project, and experience the difference of working with a company that has been providing factory-built packaged systems to the municipal wastewater industry for over 30 years.

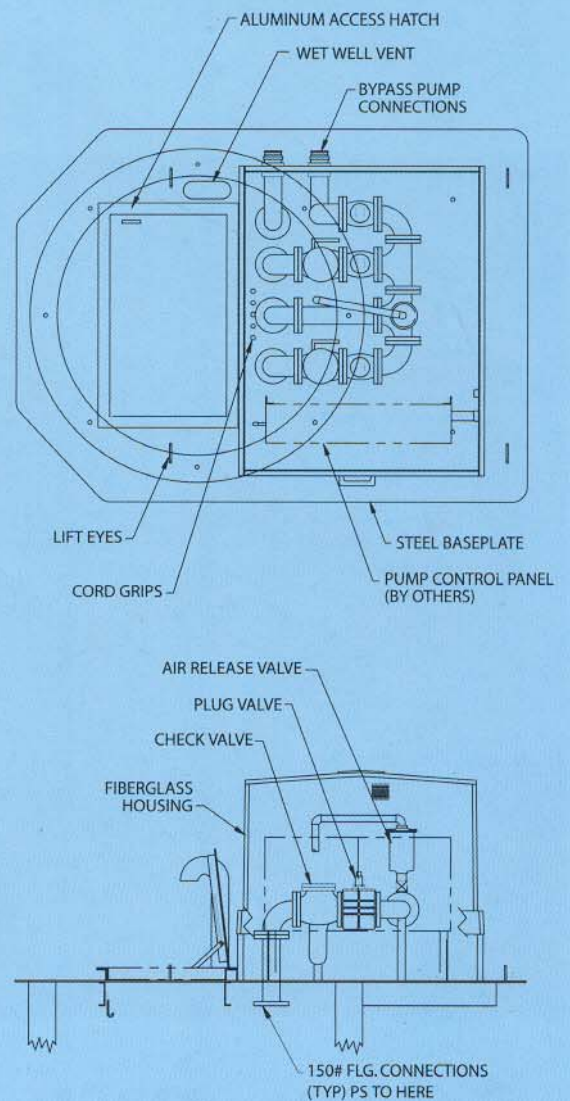
BURIED VALVE-PAC



STANDARD FEATURES:

- 2", 4" or 6" PIPING CONFIGURATIONS
- MOLDED FIBERGLASS BASIN
- BYPASS PUMPING QUICK CONNECT FITTINGS
- UPPER GUIDE RAIL BRACKETS (by others) INSTALLED
- PUMP CONTROL PANEL (by others) INSTALLED
- 300# ALUMINUM ACCESS HATCHES
- CABLE BRACKETS

TIP-UP VALVE-PAC



STANDARD FEATURES:

- 2", 4" or 6" PIPING CONFIGURATIONS
- SEAMLESS MOLDED FIBERGLASS HOUSING
- BYPASS PUMPING QUICK CONNECT FITTINGS
- UPPER GUIDE RAIL BRACKETS (by others) INSTALLED
- PUMP CONTROL PANEL (by others) INSTALLED
- 300# ALUMINUM ACCESS HATCH
- CABLE BRACKETS



Precision Systems

A division of Gasvoda & Associates, Inc.
 1530 Huntington Drive • Calumet City, Illinois 60409
 Phone: 708-891-4300 • Fax: 708-891-4401
www.precision-systems.com