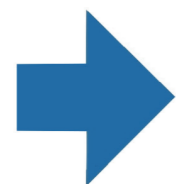


Data Communication Options



Electronic Interface Enclosure

Analog

Serial

Ethernet IP

CIM

Customer Interface Module



Features a Max. of Eight 4-20 mA Outputs, Alarms and Input

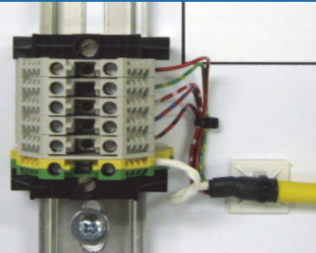
PLC

Programmable Logic Controller



For use when 4-20 mA Outputs are greater than eight

RS-232 Modbus RTU



Direct from Analyzer to Terminal Block in EIE

SUB-D RS-232 terminal for temporary laptop connection available in lower enclosure

RS-422/485 Converter



See Factory for Limitations

Modbus TCP/IP



AB Ethernet IP (Allen Bradley)



Typically used when connecting to Allen-Bradley Plant System

ChemScan[®] Accessories

Sample Handling Options & Data Communication



ChemScan, Inc.
2325 Parklawn Drive, Suite I
Waukesha, WI 53186
Phone 262-717-9500
ChemScan.com

Contact Your Local Representative for Additional Information:



www.ChemScan.com



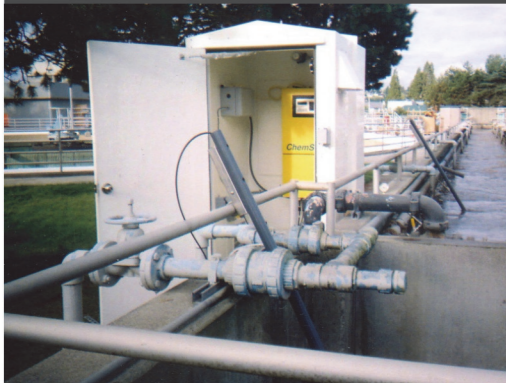
Wastewater Filter Options

Typical applications:
 - aeration basins
 - SBR
 (sequenced batch reactors)

External Filter Required
 TSS is greater than 150 mg/L
 NTU is greater than 60

No Filter Needed
 TSS is less than 150 mg/L
 NTU is less than 60

In-Situ Cyclic Filter (In-Tank Wand)



Run is less than 50 ft
 Lift is less than 10 ft

Maximum of Four Filters/
 Sample Lines per Analyzer

No external pump required

* SBR Applications Require
 Pivoting Wand Mount -
 Std. Wand is Fixed Angle

Freeze protected (Heat
 Traced option available)

Flow-Through Cyclic (FTC) Filter



Run less than 500 ft



Maximum of Four Filters
 Per Analyzer

External Pump(s)
 Required
 - Provided by ASA
 or Others

10-20 GPM

Cross-Flow Filter



Run is less than 1500 ft.

Maximum of 8 Sample
 Points Per Filter System

External Pump(s)
 Required
 - Provided by ASA
 Alternative: Valves and
 Single Central Pump

30 GPM Minimum

Sample Circulation Chamber (SCC)

For coarse screening. Algae screening protects analyzer inlet screens and reduces maintenance. Typical applications include post secondary clarifier.

TSS is less than 150 mg/L,
 NTU is less than 60

Run is greater than 20 ft
 Lift is greater than 5 ft

Maximum of Eight Sample Lines

External Pump(s) Required

- Provided by ASA or Others
 - 3 - 10 GPM

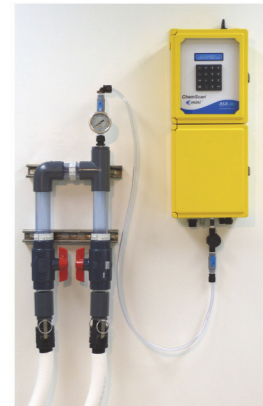


Sample Extraction Accessory

For use with the ChemScan mini analyzer. Provides a pressurized sample.

TSS is less than 150 mg/L,
 NTU is less than 60

(Includes Pump and
 Sample Circulation
 Loop Assembly)



Legend

- TSS - Total Suspended Solids
- NTU - Nephelometric Turbidity Units
- GPM - Gallons Per Minute
- Run - Horizontal Distance to Sample Point
- Lift - Vertical Distance to Sample Point

Other Accessories

Heat Traced Cyclic Sample Line

Flexible conduit prevents freezing and damage to sample line. An option for any cyclic wand application.



Outdoor Enclosure

Providing a stable environment for the ChemScan mini along with the ability to locate the analyzer near the sample site.

Filter Wand with Disposable Cartridge

Simple design, no cleaning air, water or chemicals required. Inexpensive operational cost.



Sample Circulation Pumps

Light Duty, Submersible Pump
 1.3" Max. Dia. Solids
 Weight: 20 - 30 lbs
 Power: 1/4 - 3/4 HP, 120 VAC 60 Hz
 Power Cable: 20 feet
 12 foot SS support cable



Heavy Duty, High Head, Submersible, Grinder Pump. Cast Iron Construction.
 Weight: 70 lbs
 Power: 2.3 HP 230 or 460 VAC
 Power Cable: 30 feet
 Mounting: Dual guide bars
 Note: Guide bars are typically provided by others